

TWINCLINO 4000
DUAL-AXIS
SUBSEA
INCLINATION
SENSOR
PRODUCT SHEETS

Twinclino 4000: Dual-axis subsea inclination sensor designed to withstand harsh operating conditions



SELECTION & OPTION LIST

For Twinclino 4000 the following configuration items must be determined:

- **Measurement range.** For the Twinclino 4000, inclination angle ranges of up to $\pm 80^\circ$ are possible. However, in case a smaller rotation range is required, the sensor will be set to a narrower range in order to maximize measurement accuracy.
- **Data output format.** The Twinclino sensor can be supplied with the following data output formats: 0 – 10 V, 4 – 20 mA, RS232, and CAN open.
- **Connector.** Depending on the selected sensor and data output format, various connectors are available. By default, the Twinclino 4000 is supplied with a Subconn® Micro connector.

The following features are optional:

- **Cable assembly.** The sensor can be supplied with custom-made cabling in a variety of lengths, allowable loads, and connector types.

TWINCLINO 4000 DUAL-AXIS SUBSEA INCLINATION SENSOR SPECIFICATIONS

GENERAL

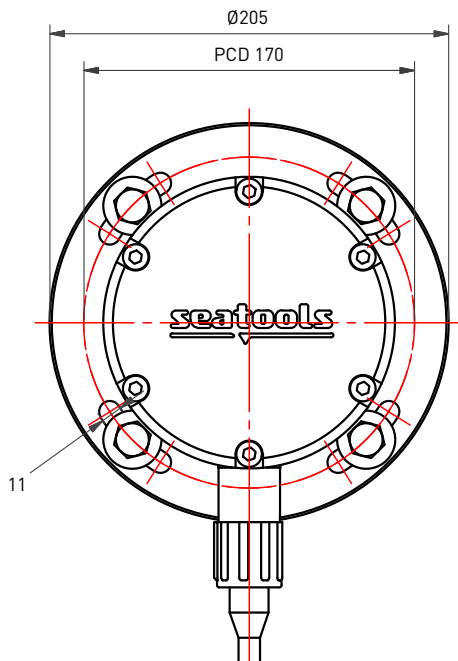
	METRIC	IMPERIAL
Main dimensions	See detailed drawings	
Material housing	Duplex	
Weight in air	± 14 kg	± 30.9 lbs
Depth rating	4000 msw	13123 ft
Operational temperature range	$-20^\circ\text{C} - +50^\circ\text{C}$	$-4^\circ\text{F} - +122^\circ\text{F}$

ELECTRICAL

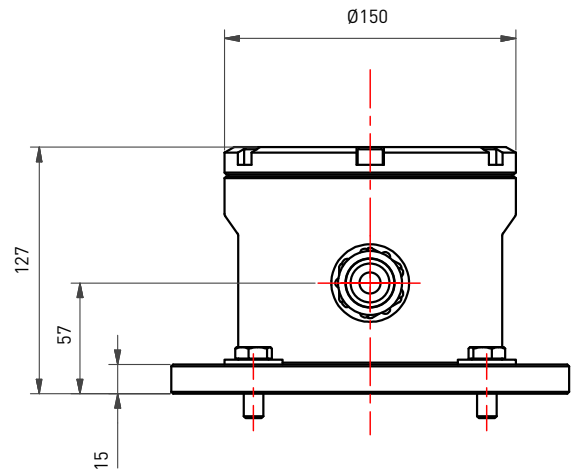
Supply voltage	10 - 30 VDC
Output signal	4 – 20 mA, 0 - 10V, RS232, CANopen
Supply current	< 30 mA
Maximum measurement range	$\pm 80^\circ$
Accuracy	0.1°
Resolution	0.01°

DIMENSIONS

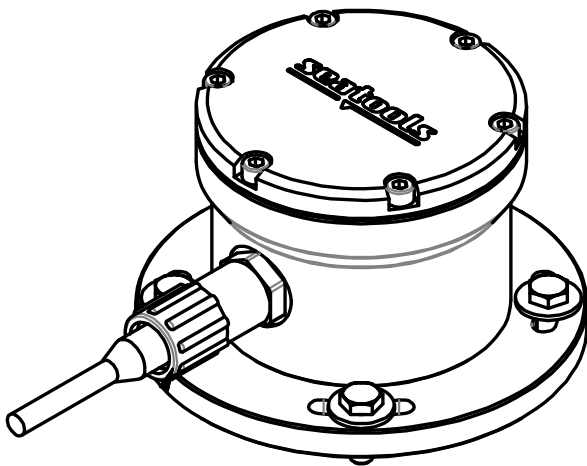
TOP VIEW



SIDE VIEW



3D VIEW



3D CAD files in STEP format are available on www.seatools.com



Edisonstraat 67
3281 NC Numansdorp
The Netherlands
Tel. +31 (0) 186 68 00 00
www.seatools.com
info@seatools.com

UNDERWATER SPECIALISTS