

PROXIS® MINI
SUBSEA PROXIMITY
SWITCH
PRODUCT SHEETS

Proxis® Mini: Highly compact subsea proximity switch designed for water depths up to 5000 msw



SELECTION & OPTION LIST

For every Proxis® Mini the following configuration items must be determined:

- **Switching output.** The Proxis® Mini can be delivered with two different switching outputs: PNP - Normally open (NO), NPN - Normally open (NO).
- **Sensing range.** The sensing range is dependent on the applied magnet. Sensing ranges of up to 20 mm are possible.

The following features are optional:

A Connector type

The sensor is standard supplied with a Subconn® Micro Male connector. Other connector types are available upon request.

B Cable assembly

The sensor can be supplied with custom-made cabling in a variety of lengths, allowable loads, and connector types.

Subconn® Micro connector



TYPICAL APPLICATIONS

The Proxis® Mini is specifically designed for accurate object detection in subsea environments. Typical applications include:

- Moonpool hatch position detection
- Subsea actuator end-position detection
- Survey frame position detection
- Lock gates position detection
- Monitoring and control systems



Proxis® Mini sensor installed on subsea compensator for empty detection.

PROXIS® MINI SUBSEA PROXIMITY SWITCH SPECIFICATIONS

GENERAL

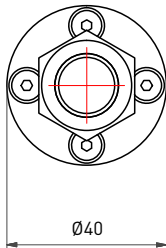
	METRIC	IMPERIAL
Main dimensions	See detailed drawings	
Material housing	Hemix 3	
Weight in air	± 0.5 kg	± 1.1 lbs
Maximum working depth	5000 m	16404 ft
Operational temperature range	-20°C - +70 °C	-4 °F - +158 °F
Sensor type	Magnetic field sensor	
Sensing distance	Depends on the magnet used. Switching distances of up to 20 mm (0.79 inch) are possible	
Flush / non-flush	Non-flush	

ELECTRICAL

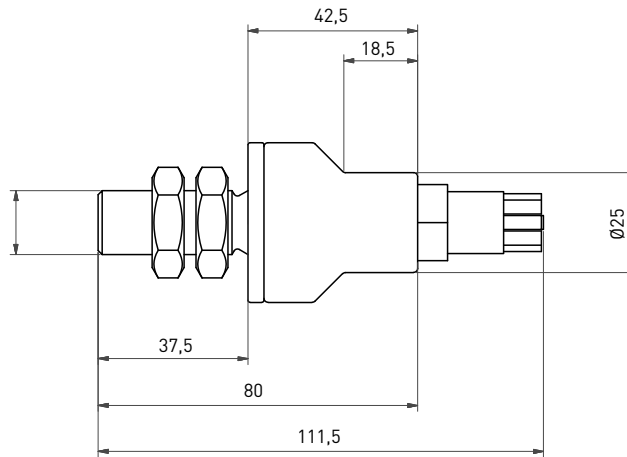
Power supply	10 – 30 VDC
No-load current	30 mA
Maximum switch current	200 mA
Voltage drop	< 3.1 VDC
Maximum switch frequency	10000 Hz
Output signal	PNP - NO or NPN - NO
Standard connector	MCBH04MSS

DIMENSIONS

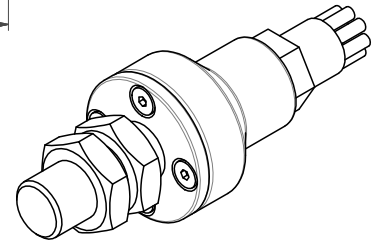
FRONT VIEW



SIDE VIEW



3D VIEW



Dimensional drawings are based on a Proxis® Mini executed with a Subconn® Micro Male connector. In case the sensor is executed with a different connector, dimensions might deviate.

3D CAD files in STEP format are available on www.seatools.com

RELATED SERVICES

Client advisory

During the selection process, we consult clients to ensure they opt for the right proximity sensor. In our recommendation we take into consideration measurement range, required accuracy, system setup, data communication, mounting possibilities, vibrations, and other factors that are relevant to your case.

Custom-made versions

Next to our standardized series, Seatools offers custom-made subsea proximity sensors that are tailored to your specifications. Please contact our sales department to request a customized proximity sensor.

Subsea monitoring & control systems

Next to the delivery of stand-alone sensors, we can deliver full-fledged subsea monitoring systems, including all related systems such as mechanics, software, electronics, and controls.

seatools

Edisonstraat 67
3281 NC Numansdorp
The Netherlands
Tel. +31 (0) 186 68 00 00
www.seatools.com
info@seatools.com

UNDERWATER SPECIALISTS